

Armstrong Protects your Structures

World's The best & proven

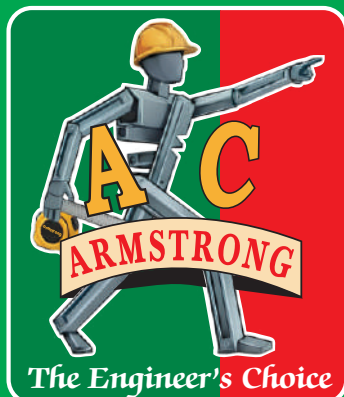
Trusted **Waterproofing Solutions**



Any Construction & Waterproofing
Chemicals



*Yes
we have it*



**ARMSTRONG
CHEMICALS PVT. LTD.**

An ISO 9001 Certified Company
BENGALURU

Customer Care : 80956 21122 ♦ Toll Free No. 1800 103 2034

ARMSTRONG CHEMICALS PRIVATE LIMITED - BENGALURU an ISO 9001 Certified Company is a premium manufacturers of Construction Chemicals, Waterproofing Compounds & Paints.

ARMSTRONG CHEMICALS backed with a team of **44 years** expertise in construction chemicals, is all set to introduce new ideas and set higher standards with a wide range of exceptional construction chemicals. Armstrong Chemicals is pioneering world class technological innovation in the field of waterproofing for the complete realm of building / construction needs across the society. ARMSTRONG CHEMICALS is been trusted as Engineers first choice for its Quality, affordability, Service, Standard and strong technical expertise. ARMSTRONG Chemicals received **ICON AWARD**, many more appreciations from **India's First Bullet Train Project, Hydrel/Thermal Projects of india** & received appreciations from **ESCI** (Engg. Staff College of India), **BIS** (Bureau of India Standards), **NAC** (National Academy of Constructions), **MES, PANCHAYATRAJ/R&B** and other scores of projects as a faculty - all over India.



Some of the Integral Waterproofing Admixtures & Super / PC Plasticizers

1. CONPROOF LW 200 (Complies with IS 2645-2003)

High performance Super Plasticizing integral waterproofing admixture

High efficiency dramatic reduction in permeability of concrete/ mortar- Resist water penetration and capillary absorption into the concrete / mortar.

- Heavy reinforcement concrete works to protect against the corrosion
- Constructions exposed to aggressive weather conditions, like towers, concrete roofs, etc
- Masonry mortars ● Floors ● water retained structures ● Foundation walls
- Used in mass concrete works. | Dosage : 200ml per bag of 50 Kgs. cement.



Available **CONPROOF No.1** at 100ml Dosage and **CONPROOF 500** at 500ml Dosage with hydro Phobic advantage.

2. CONSPLAX 411 Concrete Plasticizer & Water reducer (Complies with IS 9103-99)

Highly trusted & economical Concrete Plasticizer. Remarkable improvement in the workability by controlled water cement ratio and achieves completely water tight concrete. Protects the reinforcement. Many fold increase in the durability of concrete. For Slabs, Cana lining works, Roads, Dams Mass concrete works etc.

Dosage : 15ml to 20ml per bag of 50kgs. cement.

Also available **ROOFPLAX 311** Concrete Plasticizer & Water Reducer with Reinforcement Protecting Admixture
ROOFPLAST AEA 711 Hi Power Concentrated Air Entaining Plasticizing & Water reducing Admixture - 5 ml to 25ml / 50 Kgs. Cement



3. ROOFPLAST SP 45 Complies with IS 9103-99; BS-5075 Part 3, ASTM-C-494 Type G

High range, early strength, Super plasticizer and water reducing admixture based on sulphonated Napthalene Polymers. Dosage : 300ml to 500 ml / 50 kgs. bag of Cement.

Remarkable improvement in the quality and Co-hesion of the concrete mix, Effective dispersion of the cement particles provides higher strength without increasing in cement content or reduction in workability. Chloride free does not corrode the reinforcement. PERMEABILITY : Reduced water /cement ratio increases density and improves impermeability. Improved workability facilitates easy placing and good compaction. PUMPABILITY : Pumping of concrete by providing lubrication to cement and reducing line friction.

★ Having wide range of Super Plasticizers and Retarders. Like **ROOFPLAST SP25 / 35 & ROOFPLAST SR25 / 35 & 45 & ROOFPLAST SP 300**



4. ROOFPLAST PC 455 (Complies with IS : 9103-99, BS : 5075 Part 1 - 1985, ASTM C 494)

High early strength, free flow, super plasticizer and water reducing agent based on poly carboxylic technology
Dosage : 300ml to 500 ml / 50 kgs. bag of Cement.

Polycarboxylate Technology Products showcase water dis-persable polymers with a more complex molecular structure than the other superplasticizer. Dispersion in the Polycarboxylate are linked to polymer absorption and stearic hindrance caused by the thickness of the absorb polymer layer onto the cement particle and electrostatic repulsion through induced electrical change. High strength abrasion resistant, crack resistant, dense concrete for run ways, high ways, self compacting concrete, pumped concrete, pavements, bridges, highways concrete, and pre-cast / pre-stress structural concrete applications. ★ Having wide range of PC Plasticizers and Retarders. Like **PC233 / 344, 566 & 233R / 344R** ★ Having wide range of Next Gen. Specially designed free flow, Slump retention and compressive strength Plasticizer Based on Polycarboxylic Ether





Some of the Elastomeric Waterproof Coatings

- 5. ROOFCOAT FLEXI 100** High Performance, Durable, Elastomeric, Acrylic Polymer modified cementitious Waterproof Systems

Provides tough flexible hard wearing surface with waterproofing, Resistant to most diluted acids, alkalis, salts, moisture and fungus growth, Highly resistant to Ultra Violet rays and chemical aggression, Develops excellent bonding with any substrates. It can be used as protective coating to vertical and horizontal surfaces, Low VOC, Waterproofing of basements, toilets, sunken portions, swimming pools, drinking water tanks, roof gardening etc. Can be applied on the Fibre Mesh also to provide more abrasion resistance. Joint less and seamless membrane waterproofing. High breaking strength and tear resistance Reliable crack bridging. Has to be mixed 1 Ltr. with 2 Kg. cement and 200ml water to apply. **Coverage : 1 Ltr. / 2coats / 30 sft.** ★ Available two component systems like **ROOFBOND RFX 415** ★ **ROOFBOND RFX PLUS 210** ★ **ROOFBOND RFX ULTRA 514.** **Coverage : 1 kg. mix / 2 coats / 10 Sft.**
- 6. ROOFBOND BCS 501** - High Power, High Bond Acrylic Penetrative coating Systems. **Coverage : 1 ltr. / 40-50 Sft.**
- 7. RAINSEAL 200** **DAMP PROOF - WATERPROOF LIQUID MEMBRANE COATINGS**

High Performance Abrasion resistance Acrylic Elastomeric Waterproof Exterior Coating

Complies with ASTM C297; E903; C836/89A and BS EN 12390 Part 8:2000 and DIN 1048

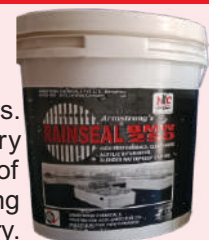
High breaking strength tear resistance and abrasion resistance, Seamless membrane with good breathability, meets the ASTM E96 standards in white colour and can be mixed with any desired colour stainers. Excellent waterproofing of RCC substrates, such as roof terraces flat or sloppy and folded plate roof, domes, roof gardens etc., - Waterproofing of stone walls / brick / metal sheets, AC sheet roofing, external walls etc. Joint less and seamless membrane water proofing with moderate heat insulation. Can be applied on the Fibre Mesh also to provide more abrasion resistance on the Terrace / Sloped Roofs etc. Upto 20% water can be mixed. **Coverage : 1Ltr./2coats/30Sft.**
- 8. RAINSEAL CLEAR 202** - High Performance Acrylic Elastomeric Transparent waterproof Coating. **Coverage : 1Ltr./2coats/30Sft.**
- 9. RAINSEAL RWC 902** **DAMP PROOF - WATERPROOF LIQUID MEMBRANE COATINGS**

Rubberized Elastomeric Flexible Waterproof Coating - (Complies with ASTM D 2823, D-412, D-471, E 96/BW, C-836)

Excellent natural Grey colour waterproofing of RCC substrates, such as roof terraces flat or sloppy and folded plate roof, domes, roof gardens, polyester built up roofs etc. Waterproofing of corrugated AC sheet roofing / metal sheets etc., Joint less and seamless membrane waterproofing. High breaking strength and tear resistance Reliable crack bridging Excellent elongation properties and recovery. Excellent adhesion strength to cement concrete / mortar, asbestos, mild steel surfaces. Resistant to UV light and weathering exposure. Excellent resistant to fungus, mild acids, Alkalies, Oils/solvents and other chemicals. Can be used on any surfaces even bitumen coated also. Can be applied on the Fibre Mesh also to provide more abrasion resistance. Upto 20% water can be mixed. **Coverage : 1Ltr./2coats/30Sft.**
- 10. RAINSEAL BMW 250** **DAMP PROOF - WATERPROOF LIQUID MEMBRANE COATINGS** (Formerly known as **RAINSEAL FLEXICOAT B 300**)

High performance Elastomeric Acrylic Bituminous Blended Waterproof Coating

Excellent exterior waterproof Terrace coating for use on new and old masonry / concrete surfaces. Provides chemical and UV resistant protective coating. Recommended for Concrete / Masonry surface, Retaining Walls, Sloped Roofs, Pre-cast roofs, Lime mortar surfaces, Terrace Roof gardening, Bathrooms & Toilets. Joint less and seamless membrane waterproofing. High breaking strength and tear resistance Reliable crack bridging Excellent elongation properties and recovery. Can be applied on the Fibre Mesh also to provide more abrasion resistance. 20% water can be mixed. **Coverage : 1Ltr./2coats/30Sft.**





Some of the Polyurethane / Polyurea Coatings

11. RAINPROOF PU 400

(Complies with ASTM 836 / EN 1062-3 Requirement of EN 1504-2)

Highly durable Polyurethane Elastomeric waterproof coating

High performance, Polyurethane elastomeric liquid membrane waterproof and damp proof coating, cured film tough, hard coating, improve the elongation properties to bridges existing and future cracks over a wide temperature range. It develops high breaking strength with good puncture resistance. High resistance to UV, by providing jointless and seamless membrane waterproofing, reflects the sunlight, thus reduces the room temperature by 4°C. Excellent resistant to most diluted acids and alkalies. to use for waterproof of RCC substrates, roofs, sloped roofs, basements & external walls. Can be diluted upto 20% of water and recommended to apply by brush/sprayer. As a Polyurethane primer coat application dilute RAINPROOF PU 400 with water 2:1 ratio wherever necessary. Two coats are recommended for dependable excellent waterproofing and damp proofing. Can be mixed with any colour pigments as per the choice. To increase the mechanical properties of the coating as per the site conditions, recommended to use Fibre Mesh / Geo Fabric, after primer coat and first coat has to be layed fibre mesh, over that another 2 - 3 coats recommended.

COVERAGE : 60-75 Sft. per ltr. / per coat on plain surface.



12. **RAINPROOF PU CLEAR 534** Highly durable Polyurethane Elastomeric Transparent waterproof coating

13. **RAINPROOF PRG 909 / RAINPROOF PU 370** Hi-durable Polyurethane Blended with Bituminous Elastomeric waterproof coating.

14. **ROOFCOAT PU 2K** Highly durable Cementitious Polyurethane Elastomeric waterproof coating.

15. **RAINPROOF FRC 623** Highly durable Polyurethane Elastomeric Fibre Reinforced waterproof coating

16. **RAINPROOF CFR 613** Highly durable Polyurethane Elastomeric Cellulose Fibre Reinforced waterproof coating

17. **RAINPROOF FPU 404** Single component cold applied heat resistance fibre reinforced polyurethane waterproofing Ultra coating

All above Products can be mixed with 20% of water. **COVERAGE :** 60-75 Sft. per ltr. / per coat on plain surface.

18. RAINPROOF PWR 690

Two component Solvent Free Hybrid Polyurea / Polyurethane Aliphatic High Resistant to Extreme Climatic Conditions and Waterproofing Coatings
Complies with ASTM C-1250 D-2196 D-1475 ASTM D 570

19. RAINPROOF PHB 660

Two component Solvent Free Hybrid Polyurea / Polyurethane Aliphatic High Resistant to Extreme Climatic Conditions and Waterproofing Coatings
Complies with ASTM C-1250 D-2196 D-1475 ASTM D 570

20. RAINPROOF PHW 600

(Two Component high performance Rapid setting - Hybrid Polyurea - Waterproof Coating)

consists of two components (Part I - ISO & Part II - AMINE). RAINPROOF PHW 600 combines the advantages of seamless spray coating with long life and high durability. Its rapid setting time provides a sprayed film which it touch dry in few seconds. Our product properties Complies with ASTM D 412 / ASTM D 4060 / ASTM D 624 C / ASTM G 154-2000, C 836 / 89 A & C - 297 / EN 13501 - I / DIN EN / ISO 5470 / CENTS 14416.

A two component 100% Solvent free fast setting hybrid polyurea/ polyurethane, High Resistant to Extreme Climatic Conditions and Waterproofing coatings with superior Mechanical properties and it is thermal, UV resistant and also chemical and weather resistant. Hybrid Polyurea-Polyurethane waterproofing system offers a robust solution for concrete structures, combining the strengths of both Polyurea and polyurethane materials. These systems are known for their excellent waterproofing capabilities with Fast curing, UV resistant, tough, Thick Film and long lasting durability making them suitable to use for variety of Applications. Recommended to areas exposed to Extreme Climatic condition. In construction works, such as Highways bridge decks, Tunnels, foundations, Terraces of the Power Houses, Roofs, Sloped Roofs, Polyurethane foam, Metal surfaces, Under thermal insulation boards on flat roofs & Swimming Pools.

Directions to use : Mix Part-1 & Part-2 @ 2:1 ratio, can be applied by Brush or Sprayer.



Some of the Water Reactive PU Grouts / Cementitious / Crystalline Grouts

21. RAPIDSTRONG GROUT PU 130

(Formerly Known as RAPIDSTRONG GROUT WRP)

Single Component, High Power Polyurethane Injection Water Reactive Foam Grout to Arrest Low to Moderate Water Seepages

Highly reactive in moist surroundings. High bonding to wet and semi wet surfaces. Arrests low to moderate water seepages. Effective sealer of cracks and voids in concrete. Easy to Inject with reasonable pot life. Gives much better performance with addition of accelerator for immediate reaction if necessary.

To Arrest Low to Moderate Water Seepages in underground structures - Foundations - Below ground structures, eg. Garages - Tunnels and underpasses - Sewage systems - Tanks

22. RAPIDSTRONG GROUT PFC 79

High performance Single component Polyurethane polymer Water Reactive, Injection Resin, Corrosion resistant and Highly Flexible Grout

Protects the MS Columns / Structures against corrosion, Liquid will remain unchangeable even after becoming a flexible solid, Does not wash away or dilutes in the ground water, When contacted with water, it reacts quickly and expands into its surroundings and forms into a flexible solid to repel the influence of underground seepage / flow, flexible solids expands and contracts as per the pressure, High strength and highly flexible.

23. RAPIDSTRONG GROUT VM 99

High Performance Two Component Injection Resin Based on Vinyl Ester Methacrylate

Multi parts composition provides multiple advantages. Deep Penetration and tenacious crack bonding and corrosion resistant in structural concrete in both dry and wet surface conditions, Can be formulated to cure down to 20°C (-4°F), Allowing application in demanding situations, High bond strength to damp surfaces or contacted water without any adversely reaction, Bubbling of formed foam layer, High early strength development, accelerating adhesion and sealing, Excellent re-injectable properties.

24. RAPIDSTRONG GROUT PCR 89

High Performance Two Component water reactive Injection Resin for Sealing and Strengthening of the Dry / Water bearing concrete structures.

25. RAPIDSTRONG GROUT ADMIX 143

Non-Shink, Free Flow, High strength Grout Admixture
(Complies with B.S 1881 part 1161983)

High ultimate strength, easy injection into concrete structure through nozzles - Even as water is reduced around 10-15%, The strength of the grout increases - Mix polymer additive with water followed by addition of cement and continue mixing for 1-2 min. to a smooth consistency. Once the grout slurry is made, the grout slurry should be used within 30min.

26. RAPIDSTRONG GROUT PB 66

Non-Shink, Expansive Free Flow, High strength Polymer Based Grout Additive.

It facilitates good flowable grout, It impart non-shrink property, Higher strength are achieved at early stage, Helps to reduce permeability, Increases durability, It is corrosion free because it is free from chloride and iron, It reduces segregation.

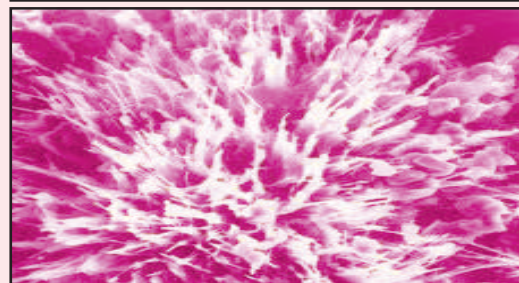
27. RAPIDSTRONG EC 211

Two components high strength Crystalline Blended Elastomeric water Barrier Grout

(Complies with B.S 1881 part 1161983)

To be grouted by mixing as recommended
Two components

For cementitious grouting / crystalline grouting / High strength crystalline blended elastomeric water barrier grouting. For filling cracks, honey combs, Weak concrete structure, for joining structural elements by injection and pressure grouting - Gravity grouting.



Some of the Low Viscosity & Under Water Epoxies / Non Shrink Cementitious Precision Grouts / Crystallisation Systems

28. RAPIDSTRONG GROUT EP 403

Two part low Viscosity Epoxy Resin free flow grout.
Confirming to ASTM-C-881-78



High capillary action-deep penetration can be injected into fine cavities and narrow gaps, Low creep characteristics under sustained loading, Resistant to repetitive dynamic load, High Compressive, tensile and flexural strength, Fast, Convenient installation with early strength gain. A free flow grout for use in situations - where heavy loads are encountered. The gap between a base plate and substrate will need to be filled in such applications as mobile Highly resistance to a wide range of chemicals, acids and alkalies, Protects concrete against chloride and carbonation.

29. ROOFCRETE EUW - Two Component Structural Grade High build UNDER WATER EPOXY mortar / concrete.

30. ROOFCRETE EP 405

(Formerly Known as **Rapidstrong Grout EP3**)
Three Component Structural grade, High build Epoxy Concrete / Motar Confirming to ASTM 827 SNF CROC 621

31. RAPIDSTRONG GP (Grout Powder) 2

Free Flow, High strength, Non-shrink cementitious precision Grout Powder
(Complies with B.S. 1881 Part 1161983 and ASTM C1107)



High strength chemicals additives mixed with graded blended cement and, filling materials will produce gaseous expansion to compensates against shrinkage and settlement in the plastic state, It produces high early strength of the mix by controlled water usage, without adding chlorides, Excellent cured strength of the grout will ensure high durability of the mix, The excellent flowability of the mix ensures high level of contact with load bearing area, High bond strength will ensures extended performance guarantee of the repairs in static conditions and dynamic load bearings.

32. ROOFCRETE MC 240

High Strength Non-Shrink Cementitious Micro Concrete

33. ROOFCRETE PFMC 122

High Strength, Polymer Modified Fibre Reinforced Non-shrink cementitious Micro Concrete

34. ROOFCRETE PMC 112

High Strength, Polymer Modified Non-shrink cementitious Micro Concrete



High ultimate strength with low permeability of cured repairs, It can be poured or pumped even in restricted areas of application, No vibration required for placement, being it forms high fluid material, It compensates for shrinkage and settlement, in plastic state with controlled expansion characteristics, High strength gain to facilitates early reinstatement, Best suitable for various structural strengthening measures, It contains no metallic aggregates and chlorides. Approximately 21.92 liters per 40 Kg bag actual yield per bag will depend on the consistency, and consider the quantity of coarse aggregate added.

35. ROOFEX GP

Crystalline Grout to make the water into Crystals wherever water founds in Water channels / Voids / Capillaries
Dosage : 250 gms. per bag of 50 kgs cement

A Free flow, Non-shrink injection grout mixing with cement to seal cracks and cold joints. Excellent Crystallization Process System improves High Strength and seals all the capillaries / honeycomb / voids and strengthen the structures and arrest the leakages.

36. ROOFEX

High Performance Crystalline Systems

37. ROOFEX XL

Liquid applied High Performance Crystalline Systems

38. ROOFEX 2K

High bonded Two Parts System of Crystalline

39. ROOFEX COP

Cement Based Waterproof Coating with Crystallization and Osmotic Properties
(Complies with B.S. 1881 Part 1161983 and ASTM C1107)

Excellent waterproofing treatment for the positive and negative pressures of leakages, seepages and dampness. Protects concrete and reinforcement steel, permits concrete to breathe, produces crystalline formation on moistured concrete. Surface must be pre dampened prior to application. Thoroughly water curing is required for better results.

It penetrate deep into the concrete and diffuse into the concrete for a long time it also reacts with cement material and fill up the airline cracks inside the concrete with multiplied crystals as a result of chemical reaction and make the porous concrete into a sound substrate from its gross roots. Excellent treatment for negative pressure of water including water retaining structures, effluent treatment plants & sewage plants.

Coverage : 0.75 to per Sq.mtr./Kg. / coat



Some of the SBR / PB / Epoxy Bonding Agents / Anchore Grout / Plugging Compound

40. ROOFBOND SBR 401

High Performance Specially Designed SBR Latex Polymer based Bonding Agent

41. ROOFBOND MPB 301

(Acrylic Emulsion Modified concrete Bonding Agent and Admixture)

42. ROOFBOND PB 210

(Acrylic Polymer Bonding Agent)

Directions for Use : Mixed 1:1 ratio with cement as a bond coat. If site requires polymer mortar / concrete, can be mixed as an admixture 1 ltr. to 5 ltrs. per bag of 50 kgs. cement.



Its provides excellent bonding properties to old concrete to concrete / plaster, between brick / block jointing like stone / granite masonry works. High quality modifier and multi functional product provides highly durable and impermeable cementitious concrete / mortar with excellent weather resistance for structural repairs and restoration, Filling of the tile / granite / marble / stone joints by adding cement & fine sand, It increases tensile and flexural properties. Easy to use, economical, eco-friendly non-toxic material, compatible with all types of cement. The addition of these liquids with cement mortar reduces permeability and therefore helps to reduce the rate of attack by aggressive chemicals, acid gases and water.

43. ROOFBOND EP 502

Epoxy resin based high strength bonding agent

(Complies with as 4020 - 2018; AWQC Report 32319)



It can be applied by brush, after thorough preparation of surface. Excellent bond strength which exceeds to tensile strength of the applied concrete. It can be applied on both dry and damp surfaces. Ideal to use Epoxy Bonding for new concrete / cementitious materials to existing concrete / cementitious surfaces and for Vertical as well as horizontal surfaces, where concrete can be supported by form work - Best suitable for critical repairs and extensions of structural concrete in loaded structures like Dam piers, bridges, roads, factories, buildings etc. Ideal to use at the places where specific designs of extra steel reinforcement and form work is required. Mixing : Part-1 & Part-2 - 2:1 ratio. **Coverage :** 1 kg. / 2 Sq.mtr. / per coat.

44. ROOFBOND EPP 504

Epoxy Pourable Resin Based Bonding Agent
follow the Armstrong's advise to mix and pour
(Complies with as 4020 - 2018; AWQC Report 32319)

45. RAPIDSTRONG GROUT AG 177

Two parts high strength polyester Resin Anchor Grout
(Complies with ASTM-827 SNF CROC 621)

46. RAPIDSTRONG GROUT AG PRIDE

Two parts high strength polyester Resin Anchor Grout
(Complies with ASTM-827 SNF CROC 621)



Excellent chemical Resistance, Corrosion resistant, Can be used in wet or under water conditions, Non-expansive, Good consistency, Can be used over good temperature range, Rapid strength gain, Not Effective by vibration, Free flowing. Fixing of foundation bolts, machiney base plates fixing of reinforcement and extension bars, load bearing anchorages - like attachment to machinery equipment, Structures etc against movement - Rock bolting (in tunnels etc) - The drilled holes should not contain grease, Oil or any Concrete, rock etc. 1 Kg. covers the 500ml volume.

47. RAPIDSTRONG PLUG 31

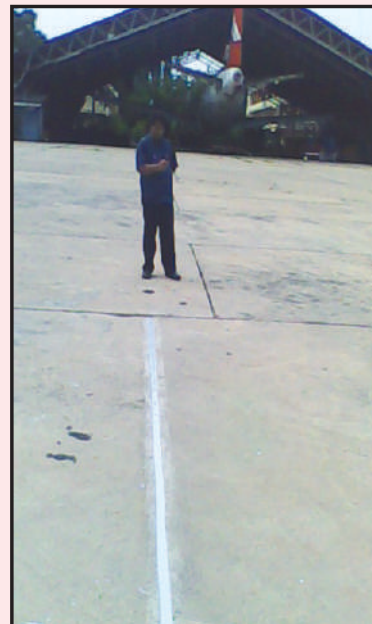
(Formerly know as Wonderseal Plug)
Single Component Fast Setting Cement based Plugging compound



48. WONDERSEAL PLUG XL

High Performance Hydraulic setting instant plugging and expandable material with water resistance

Stops water flow Sets in approx. 30 seconds. Can be used for Underwater plugging to stop the leakage and seepage. Can be used Dry powder where water leakage is there and plug it. If required mix with water to prepare as putty and plug it. If required slightly expand the hole point of the leakage to allow the plugging compound inside of it. Easy application, Sealing wet surfaces - Caulking tunnel segment joints - Fixings in water structures where immediate use is required - Installation of steel elements in concrete or masonry Erosion resistant mortar for elements affected by rain.



Some of the Sealants

49. WONDERSEAL XL 65

High Performance, Highly flexible water Resistant Acrylic Latex Caulking Compound

50. RAPIDSTRONG CRACK SEALER 85

Polymer modified Fine Crack Filling compound (Powder form)

51. RAPIDSTRONG CRACK SEALER 75

Polymer modified Silica Based Crack Filling compound (Powder form)



Easy to apply, make the Cracks / Joints as 'V' groove, clean the same & fill the same. Highly durable & Highly Flexible seal. Excellent adhesion and finish, Can be over painted. Stops the water absorption & arrest the seepages & leakages completely. Excellent bonding strength to the adjoining surface, Excellent UV resistance & breathability. Wall Cracks / Replacement window installations - Door and windows frames surrounds - Fitted furniture Staircases, Wall/celling angles, cornices, Skirtings

Powder forms : RAPIDSTRONG CRACK SEALER 85 & RAPIDSTRONG CRACK SEALER 75 has to be mixed with water and fill the cracks

52. ROOFEXSEAL PU 212 (White / Grey)

Single component polyurethane sealant (Gun grade / Pour Grade)

(Complies IS : 11433 (1985) ASTM C 920-87 : B.S. 5212 and AS 4020:2018)



Make the Cracks / Joints as 'V' groove, clean the same & fill the same. Low modulus 50% (+25%) (ASTM C 719) Excellent durability Easy to gunout, High bond strength single component, Paintable (refer limitations) Non staining, Low odour, Excellent resistance against hydrolysis, ageing and a wide range of chemicals, Resistance to fungal attack, Excellent primerless adhesion to concrete, timber, masonry, bricks, aluminium, metal and ceramics, Resistance to chemicals.

Door and window frames surrounds - Fitted furniture - Joints of Staircases - Wall / Ceiling angles, Cornices, Skirtings.

53. ROOFEXSEAL PRIMER PS / NPS

For **POROUS SURFACES** Primer for Polysulphide sealant
NON POROUS SURFACES Primer for Polysulphide sealant
(Complies with C-920-87 DIN -18549 TT-S-00227 E BS-4254-83)

After surface preparation as per site condition on Porous Surface Roofexseal Primer PS and on Non Porous Surface Roofexseal Primer NPS has to be use before sealing with Polysulphide sealant.

54. ROOFEXSEAL PS

Two Part Polysulphide Sealant (Gun Grade / Pour Grade)

(Complies with C-920-87 DIN -18549 TT-S-00227 E BS-4254-83)



The surface should be cleaned properly. However, sealant that has become damaged can be replaced by cutting out the affected area, cleaning and priming the joint surface and apply fresh sealant, by mixing properly Part-1 & Part-2, see that minimum 50% depth of the width has to maintained. Potable water retaining structures- Expansion Joints in Buildings- Internal Structural Seals - Roads & Highways.

55. RAINSEAL BXL

Ready to use Acrylic Blended Bituminous Cracks / Joints grout



Cut the cracks "V" shape, remove the loose particles, cleaning the surface and seal the cracks with paste. Provides excellent bonding and flexible properties. Excellent resistance to water and abrasion. Recommended to seal the cracks / joints of A.C./ G.I. Sheets / masonry / concrete cracks, for repairs of bituminous roads etc.,

56. RAINSEAL BS

Bitumen Sealing Compound.

Elastomeric bitumen sealing compound for sealing of joints, run ways, Roads, Parking places, Platforms etc.,



Some of the Polymer Modified Mortar / Admixtures / Floor Hardners

57. ROOFCRETE AR SYSTEMS 476

Two Component Structural Grade High build polymer modified, fibre reinforced, reinstatement mortar system

Packing : 25 Kgs. / Yield 13.5 liters mix
Part-1 Polymer liquid & Part-2 Powder.

Mix the Polymer liquid with required water and add Powder form to prepare it as mortar. Provides excellent resistant to the cracking and to over comes the risk of shrinkage. Chloride free best performer for reinforced concrete. Highly durable and high flexural strength even thin sections of concrete. Low permeability and protection against moisture, atmospheric conditions. High compressive strength for structural repairs and rehabilitations. Excellent workability, better cohesion for mortar/concrete mixes.

58. ROOFCRETE AR 576

High performance super latex admixture for Repairs & Waterproofing



Take cement, sand if required aggregates mix the water along with the AR 576 as designed / required. Advantages we can get as above mentioned Roofcrete AR systems.

Mixing : 2 to 5 ltrs. per bag of 50 Kgs. cement

59. ROOFCRETE URP 908

High performance universal repair products based on SBR latex for Repairs and Waterproofing



Ideal to use for waterproofing applications, concrete / mortar repairs, protecting rebars & as a bond coat to repair sections. Excellent for repairs of beams, columns, slabs, ceiling areas & members, excellent waterproofing for terrace, toilets, chajja, masonry walls, sloping RCC roofs etc. Recommended as a bonding agent mixing with cement 1:1 ratio and as an admixture 1 - 2 ltrs. per bag of 50 kgs. cement.

60. RAPIDSTRONG LFH ADMIX 91

Heavy Duty Liquid Floor Hardening Admixture

500ml to 1 Ltr per Bag of 50 Kgs Cement. Higher dosage rated yield better abrasion resistance

It provides a dense, tough surface with four times abrasion resistance than plain cured cement concrete & is capable of withstanding the abrasion and impact loading seen by floors slabs of with numerous industrial and manufacturing facilities. It can also be mixed in mortar consistency. Recommended for Industrial flooring, Railway Plot forms, Shipyards, Weighing Bridge floor Concreting etc.

61. RAPIDSTRONG NH 89

Non-metallic monolithic surface floor hardener
Complies with IS 1237-1980

High abrasion resistant floor hardener giving a maintenance free floor, A bond monolithically to the base concrete and ensure a hard wearing surface, Hard dense surface resist to oil and greases. For areas subjected to heavy wear and tear - Can also be used on area subjected to heaviest traffic such as : loading bays work shops machine shops, ramps pill ways etc - steel industries, power station, agricultural buildings, distillation plants, laboratories.

Coverage : Rapidstrong NH may be applied at rate 3.5 kgs/m² over green concrete for normal traffic & 6-12 Kg/m² for heavy traffic. Higher application rates yield better abrasion resistance.

62. RAPIDSTRONG FM 90

Metalic monolithic surface floor hardner

63. RAPIDSTRONG CFH 92

Heavy Duty Colour Floor Hardener

Apply @ 6 to 12 Kg / m² over green concrete. Higher application rated yield better abrasion resistance.
General Colour Shades Available.

A dry shake, Non-metallic, heavy duty, colour floor hardener with cleaned and graded non-metallic aggregate coloured in a high strength cementitious acrylic binder. It provides a dense, tough surface with four times abrasion resistance than plain cured cement concrete & is capable of withstanding the abrasion and impact loading seen by floors slabs of with numerous industrial and manufacturing facilities.



Some of the Tile Adhesive

64. TILEX 350

High Performance Floor And Wall Tile Adhesive
Complies with IS 15477 : 2019 Type 1 / ANSI : 118.1 T

65. TILEX 351

High Performance Polymer Modified Floor & Wall thin set Tile Adhesive Polymer modified for fixing ceramic tiles, Vitrified tiles and stones on interior floor, wall and external floors.

(Complies with ANSI A118.4 ET;
EN 12004 as C2 TE & ; IS 15477:2019)

Single component tile adhesive. Just add water and apply, Bonds the tiles to various substrates. Economical & Easy to use. Exceeds shear bond strength requirements. Brick masonry-Cement plaster- Concrete Masonry - Concrete - Cement Terrazzo - Existing Natural stone - Existing Vitrified Tile & Ceramic Tile.

Coverage : Approx. 55-60 Sft per 20kg bag with 1/4" x 1/4" (6mm x 6mm) square notched trowel for average bed 3mm.

Packing : 20 & 40 Kgs.

Tilex 350 can be mixed with Tilex URP Admix 73 for use on external wall area, if required.

66. TILEX 353

Multipurpose High Performance Elastic Polymer Tile Adhesive with no Vertical Slip on deformable surfaces.

(Complies with ANSI A118.4 & EN /
ISO with a C2TES1 & IS 15477:2019)

Coverage : Approx. 55-60 Sft per 20kg bag with 1/4" x 1/4" (6mm x 6mm) square notched trowel for average bed 3mm.

Economical & Easy to use, Bonds to various substrates, Single component, just add water, Excellent durability, Adhesion to most construction materials, Hardening without shrinkage, Good workability, Water and shock resistant.

Fixing ceramic tiles to kitchen surface or work tops, to wood or iron surface - Fixing on heating screeds - Fixing vitreous mosaic - Fixing natural stone and marble affected by humidity - Fixing ceramic tiles of all types and sizes on difficult substrates or ones liable to warp considerably. **Pack :** 20 & 40 Kgs.

67. TILEX 521

High Performance Two Component Resin Based Hybrid Adhesive is a Multipurpose Thin-set Designed for Installing Large Format Tiles & Stones on substrates like Glass Tiles & Dry Walls

Complies with ANSI A 118.4; ANSI A 1178.15;
EN 12004 : D2TES2; IS 15477 : Type 4TS2

Coverage : Approximately 25 Sq.ft per 10 Kg material (Part A - Part B) with a 6 mm x 6 mm notched trowel for 3mm thickness

Economical and Easy to use, Two component : Easy to mix and use, Highly flexible adhesive - sustains heavy vibrations, Low VOC, Excellent workability and trowel ability, Foot traffic will arrived in 1 Day, Chemical resistance to solvents, alkalis & oils, Moisture Resistance, Can be used for Tile-on-Tile applications, Water, freezing, thermal shock resistant, Excellent bonding to plasters, MIVAN concrete, Dry walls, Cement boards etc

Fixing large format tiles, precast terrazzo, natural stones on substrates like drywalls, Gypsum boards, Cement backer boards, marine plywood, brick masonry, Concrete masonry, HDF and MDF boards, Plywood, MIVAN concrete, Calcium silicate boards, Green boards - Fixing vitreous mosaic. **Pack :** 10 & 20 Kgs.

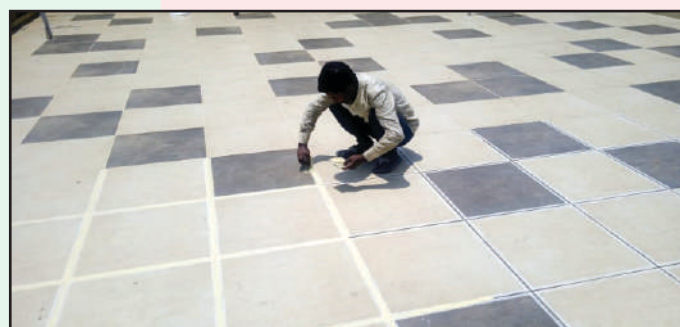
68. TILEX EPOXY ES 301

Quick Epoxy Bonding Stone Adhesive For Large Format Tiles, Marbles Granites & Ceramic Tiles Etc.

Packing : 500 Gms., 1, 2, 10 & 20 Kgs.

Easy to mix 1:1 ratio, Durable permanent bond, will not deteriorate over time, Fast permanent Bond / 15 to 30 minutes setting time, Non staining ideal for white and light color marbles, other stone and tiles. Brick / Masonry - Cement backer board - Concrete masonry units - Large Format Tiles, Marbles Granites & Ceramic Tiles in Vertical and Horizontal surfaces - Steel surface must be cleaned to remove oil, dust, oxidation and other bond inhabiting materials.

Also Available : TILEX EPOXY PA 221 / TILEX EPOXY 307 / TILEX EPOXY 509



Some of the Tile Grouts / Admixtures / Soil Modifier / Stabilisers

69. **TILEX EPOXY STAIN FREE PROTECTION 100**

STAINFREE EPOXY TILE GROUT FOR FLOOR AND WALL

Stain free Protection Epoxy
Tile Grout for Floor & Wall



After laying the tiles with Tile Adhesive, it is recommended to maintain the specified gap between them. Clean the tile gap so that there is no foreign matter in which the material has to be placed. All components of TILEX EPOXY 100 - Stain free Protection has to be mixed thoroughly & care should be taken to see the homogeneity of the mixed epoxy. Mixing of the material has to be done by using mechanical mixer & used within the stipulated Pot life. Can be used in the areas like Kitchens, Bathrooms, Floor & Wall applications, Wash areas, Swimming Pools etc., Interior & Exterior use.

70. **TILEX TG (Tile Grout) U 1600**

High performance UNSANDED POLYMER modified cementitious Tile Grout

Designed for Exterior & Interior use, Color-fast, Highly water resistant, weather resistant and stain resistant, Non shrinking & cracking, Smooth and Glossy finish, Improved efflorescence control, Easy application, Clean-up and maintenance.

71. **TILEX TG (Tile Grout) S 1500**

High performance SANDED POLYMER modified cementitious Tile Grout

Tile Joints Internally / Externally | Swimming Pools | Bathrooms | Kitchen Sinks TILE JOINTS LIKE : Ceramic, Vitrified, Clay tile, Marbles, Kota stones, Mosaic etc. Just add water and seal the joints. If required Tilex URP Admix 73 / Tiles Superlatex 333 can also be mixed for abnormal Hi-bonding strength.

Coverage : 4 - 4.5 Sq. Mtrs. / Kg. of 150 mm x 150mm tile size.

72. **TILEX URP ADMIX 73**

High Performance Latex Additive For Cementitious Sanded And Unsanded Grout For Tile Joints

High performance latex rubber additive for use with cementitious sanded and unsanded grouts in place of water or in adhesion to the water for a dense and color fast grout joint. Recommended as an admix with tile grout to provide high strength adhesion, flexibility and excellent waterproofing for internal & external areas. Improves the performance of cement grouts for all types of ceramic tile, brick, marble, natural stone and agglomerate stone installations. And also recommended to mix with tile adhesives for walls & floors thin set mortar applications. For high shear bond strength, incredible bond to exterior glue plywood & concrete, excellent exterior and submerged applications and resistance to diluted acids.

Pack : 250ml, 500ml, 1, 5 & 20 Ltr.

73. **TILEX SUPERLATEX 333**

High Performance Latex Liquid Admixture for Cement Grout for Tile Joint

Dosage : 200 - 250 ml per bag of 50 kgs. cement.

74. **RAPIDSTRONG SMP 110**

Soil Modifier/Stabiliser and Lower water permeability systems for Roads, Bridges & Dams

Also available - **ALSTRONGSEAL**

Soil Layer	Rapidstrong SMW110 water	Rapidstrong SMW 110	Spray Rate Ltrs. /m2 upto	No. of Application
Bottom intermediate and top layers	<1000 ppm 1 Kg-800 lts.	in Kgs. 0.5	saturation 1-3	2
Shoulders & Side slopes	TDS ratio 1 Kg-800 lts.	1.0	2-3	2
Stone Pitching & Soil	1 Kg-800 lts.	1.0	1-2	1
Stone Pitching & Cement mortar	1 Kg-40 lts.	1.0	0.5	1

It is highly resistant to possible deformation of soil, Excellent retention capacity to keep up strength of roads by maintaining dry CBR even in wet conditions, it also controls the erosion of soils in slopes and shoulders, It eliminates the capillary rise and ingress from top, It reduces the water permeability of soil bases, While maintaining Vapor permeability

It is ideal to apply the solution in two dimensional system - of spray - dry spray on compacted soil - Reduction of water permeability of the soil can be achieved upto 98% of the soil surface in first spray - And the second spray ensure 100% Penetration and reduced water permeability of micro cracks in the soil surface.



Some of the Anti Corrosive / Zinc Rich / Corrosion Preventive Inhibitor & Set Accelerators

75. ALSTRONG ZP 777

High Performance Zinc Rich Primer for Anti Corrosive and Rust convertor

Pack : 250ml., 500ml., 1, 5 & 20 Ltrs.

Also available

76. ALSTRONG RC 190 - Rust Convertor

77. ALSTRONG ZP PRIMER 210

Two Component Zinc Rich Anti Corrosive Epoxy Primer

High power, highly penetrative rust converter-rust Encapsulating coating for steel & iron, Protects steel & iron against aggressive corrosion, industrial pollution, coastal environment, chemical attacks, Weathering conditions and water, Provides excellent bonding to the steel/concrete structures, Can be over coated with rubber, acrylic, PU, epoxy, water dispersion coatings. Good ventilation is required in confined areas to ensure proper curing - Relative humidity should be below 85%.

Coverage : 1 ltr. / 60 sft. on plain surface.

78. ALSTRONG AC 180

Acrylic based long lasting corrosion preventive coating

Coverage : 1 ltr. / 60 sft. on plain surface.

Recommended Two coats.

Pack : 500ml., 1, 5 & 20 Ltrs.

Also available

79. ALSTRONG RR - 170 - Rust Remover

It penetrates inside every microscopic cracks and crevices and bridge minute cavities due to its ultra high surface attraction. Ready to use, single component, no primer is required, excellent chemical resistance to acids, salts, oxidizing agents, moisture and fungus growth. Excellent adhesion to steel and concrete.

Good ventilation is required in confined areas to ensure proper curing - Relative humidity should be below 85% - Substrate temperature should be at least 3°C Above dew point but not above 5°C.

80. ROOFPLAST SA 80

Set accelerator for sprayed concrete / Emergency concrete applications

(Complies with IS 9103-99)

Coverage : 1 - 3 Kgs. / 50 kgs. Bag of Cement

Pack : 5, 20 & 225 Kgs.

81. RAPIDSTRONG SG 88

Set accelerator Admixture for sprayed concrete, shotcrete gunite process (Complies with IS 9103-99)



Produces exceptionally high early strengths, Chloride free, safe in prestressed and reinforced concrete, High early strength allows for spraying in thicker layers, Plasticizing action gives workability and strengths, Fast setting improves frost resistance, Suitable for bricklaying mortar. Tunnel linings, Mines linings, Rock support sprayed concrete works, Pre-cast concrete, Concrete placed in cold weather, Mortar / Concrete repairs, under water Foundations, Soil stabilization industries, Any Emergency concrete repairs / concreting.

82. RAPIDSTRONG QS 113

Quick setting, rapid hardening and water proofing compound

(Complies with IS 2645-2003)

Coverage : 500ml to 3 ltrs. / Per Bag of 50 kg. cement

Pack : 1, 5, 20 & 210 Ltrs.



Ideally suited for wet mix wherever Flowable, sprayed concrete converts into cohesive, non sagging consistency. The quick setting property allows : Rapid work progress and the ability to construct thick sprayed concrete linings via layered application during the construction sequence, The unique product formulation provides extremely fast setting coupled with continuous early-age strength development, It's a liquid product and thus provides easy handling.

83. ALSTRONG FS 334

Fast Setting - Rapid Hardening Water Resistant Admixture

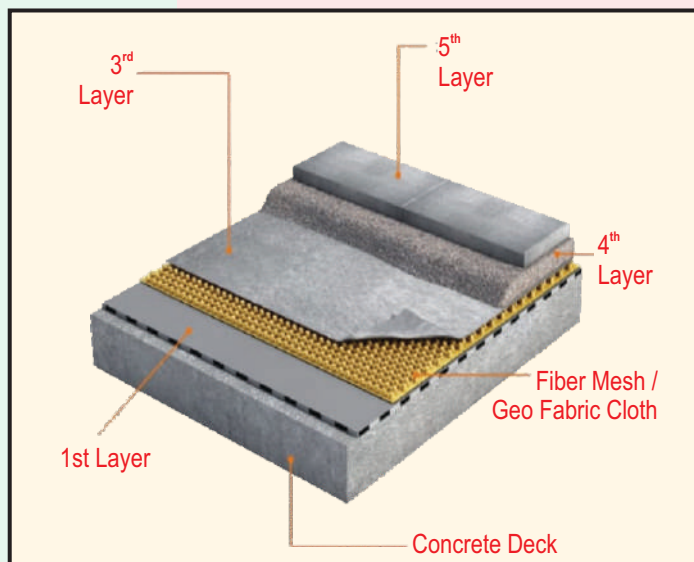
(Complies with IS 9103-99)

Coverage : 1 ltr. to 3 ltrs. / Per Bag of 50 kg. cement

Pack : 1, 5, 20 & 225 Kgs.



Wherever exceptionally high early strength, good final strength and extremely thick layers are required, temporary and permanent rock support in tunnels Rock support in mining In poor ground conditions, Soil stabilization etc. Also suitable for acceleration of cementitious grouts, such as used in TBM tunnel Linings.



Some of the Curing compounds and Waterproofing layer systems

84. ROOFEXCURE WB

Acrylic blended white pigmented water based concrete curing compound
Complies with ASTM-C-309



85. ROOFEXCURE WX

Wax based white pigmented concrete curing compound
Complies with ASTM-C-309

To provide a membrane which will retain sufficient moisture for effective curing of an applied concrete surface when its in green. It forms into a non-penetrating, seamless film when contact with cement surface, which prevents water evaporation. Thus reduces the use of water, minimizes risk of drying shrinkage cracks and no risk of poor curing and ensures that cement hydrates efficiently. It can be applied by brush or spray which forms moisture barrier for whole of the curing period.

Coverage : 4-5 Sq. Mtrs./Kg./Coat **Pack :** 1, 5, 20 & 225 Kgs.

86. RAINCARE (ROOFCARE) PRC 5 LAYER SYSTEM

High strength, Heat resistant Fibre reinforced
PU Blended Acrylic Elastomeric liquid waterproof
membrane Coating

87. RAINPROOF PUF 5 LAYER SYSTEM

High Abrasion, Heat Resistant Fibre reinforced
Polyurethane Advanced Technology 3rd Generation
Elastomeric liquid waterproof Membrane Coating System

88. RAINSEAL HFC 5 LAYER SYSTEM

High strength, Heat resistant Fibre reinforced
Acrylic elastomeric and liquid waterproof membrane Coating

89. RAINPROOF PBR 5 LAYER SYSTEM

(High Performance **Polyurethane, Highly Elastomeric**
Polymers and Bituminous Blended Fibre Reinforced
Heat Resistant Waterproof Coating)

90. RAINPROOF PHC 5 LAYER SYSTEM

Two Component High Performance **Polyurethane**
based Elastomeric Rubberized Fibre Reinforced
Heat Resistant Waterproof Coating

91. CONPROOF FPA 5 LAYER SYSTEM

High Performance, Fibre reinforced, **Crystalline**
Polyurethane based, High Abrasion Resistance
Elastomeric Waterproof Coatings

92. RAINCARE BRC 6 LAYER SYSTEM

High strength, Heavy duty, Abrasion resistant,
Heat Reflective Fibre reinforced Hybrid acrylic
elastomeric liquid Waterproof Membrane Systems

93. RAINCARE PUA 7 LAYER SYSTEM

High Performance, High Abrasion, Heat Resistant
Fibre reinforced Polyurethane Advanced Technology
Elastomeric liquid waterproof Membrane Coating System
(Confirming to ASTM G-154-2000, C-836/89 A & C-297)

Surface to be properly cleaned Cracks are sealed with PU Sealant by making 'V' groove. As suggested the different chemical coatings i.e. **1st Layer, 3rd Layer, 4th Layer & 5th Layer** has to applied. As a **2nd Layer** Fibre mesh / Geo Fabric to be laid. These are highly durable, flexible and has a high level of waterproofing, crack resistant and heat resistant liquid membrane coating. Excellent resistant to U.V. Rays, frost etc., The most advanced technic of fiber reinforcement provides higher tensile strength, crack and abrasion resistance.

PRC 5 Layer System & PUF 5 Layer Systems are in 1st Layer in Black, 3rd in Grey, 4th Layer Half White 5th Layer Pure White.

HFC 5 Layer System 1st Layer Grey & other layers in White.

PBR 5 Layer System 1st & 3rd Layers Black & other 4th & 5th Layers in White.

PHC 5 Layer System 1st, 3rd, 4th & 5th Layers in White Colour.

FPA 5 Layer System 1st, 3rd, 4th & 5th Layers in Grey Colour.

Recommended for Roofs, Pre-cast slab roofs like Power houses, Industrial terrace floorings, Concrete / lime mortar / masonry Floorings, Metal / Asbestos Sloped Roofs

Coverage : Per Sft. 1.1 to 1.2 ltrs. / 4 coats (4 Layers)

Pack : 5 & 20 Ltrs.

(Confirming to ASTM G-154-2000, C-836/89 A & C-297)

Wherever De-bonded concrete/mortar is there, these systems recommends without removing the screed or concrete and assures the best waterproofing. Surface to be properly cleaned Cracks are sealed with PU Sealant by making 'V' groove, any patches has to be rectified with bonding agent. As suggested the different chemical coatings i.e. **1st, 3rd, 5th 6th** Layers etc has to applied. As a **2nd & 4th** Layers Fibre mesh / Geo Fabric to be laid.

Coverage : Per Sft. 2.1 ltrs. / 4 to 5 coats



Some of the Interior / Exterior Paints & Primers

94. SHINESHIELD INTERIOR EMULSION PAINT

High Performance High Shine Interior Emulsion Paint

95. SHINESHIELD PREMIUM INTERIOR EMULSION PAINT

A Unique Superficial, High Shine Interior PREMIUM Emulsion Paint

96. SHINESHIELD ULTIMATE INTERIOR EMULSION PAINT

A Unique Superficial, High Shine Interior ULTIMATE PREMIUM Hi-Decor Emulsion Paint



Pack : 1, 4, 10 & 20 Ltrs.

Shineshield interior emulsion is a special type of co-polymers and fine pigments available with special additives like anti-fungal, anti-algae, anti-fading, anti bacteria to get optimum dispersion level etc. It gives excellent durability for interior walls. Used for interior wall surface, plasters, brick, asbestos, ceilings etc.

Negligible VOC content meets the ISI Standards. An ECO Friendly-Long lasting-Quick drying-Good washability Economical product with optimum performance - Easy to Apply - It delivers more whiteness in comparison to other products in the category making the walls look fresher and cleaner - Smooth and pleasing Finish. Colour Stainers can be mixed to get the desired colours.

Coverage : First Coat 1ltr with 1 ltr water - 220 to 280 Sft./Ltr.
Second Coat 1 ltr. with 500 to 600ml water - 120 to 140 Sft./Ltr.

97. SHINESHIELD EXTERIOR EMULSION PAINT

High performance, High Durable, Weatherproof Exterior Emulsion Paint

98. SHINESHIELD PREMIUM EXTERIOR EMULSION PAINT

A Unique Superficial, High Shine, **WEATHERPROOF** Exterior PREMIUM Emulsion Paint

99. SHINESHIELD ULTIMATE EXTERIOR EMULSION PAINT

High performance, High Durable, **WEATHERPROOF & SEEP SHIELD** Exterior Emulsion Paint

Pack : 1, 4, 10 & 20 Ltrs.

Coverage : First Coat 1ltr with 1 ltr water - 270 to 310 Sft./Ltr.
Second Coat 1 ltr. with 500 to 600ml water - 140 to 160 Sft./Ltr.

Performance warranty of 5-8 years and Waterproofing warranty of 5 years, If applied with Rainseal 200 / Rainproof PU 400 as a basecoat

Shineshield exterior emulsion has negligible VOC content meets the ISI Standards. High performance, pure acrylic exterior painting system which gives outstanding protection for exterior surface. It provides effective waterproofing & anti carbonation properties. Concrete, plaster, masonry, brickwork, block work, gypsum, timber. It doesn't allow dirt / dust to settle on vertical walls. The exteriors look New, with optimum performance. Provides excellent water resistance, UV radiation and dirt penetration. It gives hard and tough paint film - The innovative sun block technology reflects back 90% of the sunrays which reduces surface temperature. If it is in White. It makes naturally interior cool - High dust pick up resistance - Ascent shades have rich sheen and rich appearance - It is specially formulated to be resistant to the elements such as fungus, algae, chalking and flaking. It gives a smooth look - It does not allow air polluting harmful vapour and paint odour that pollutes environment. Colour Stainers can be mixed to get the desired colours. 3 coats needed for Dark colours.

100. RAINCARE CP (Interior & Exterior)

High performance, Highly Durable, Polymer Blended Water Thinnable White Cement Primer

Coverage : 1ltr with 1 ltr water - 80 to 90 Sft./Ltr.

101. RAINCARE WP (Exterior)

High Performance Polyurethane & Polymer Blended Elastomeric White Waterproof Primer

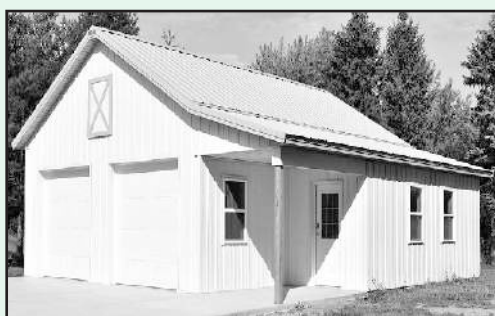
Coverage : 1ltr with 20% water - 60 Sft./Ltr.

With excellent bonding, UV Resistant, under coat primer for any polyurethane polymer paint & Membrane coatings.

Pack : 1, 4, 10 & 20 Ltrs.

Exterior & Interior Masonry Plastered / Concrete / Asbestos surfaces and Brick work. For High Performance, Alkali resistant and strong Adhesion under coat primer for any paints. Excellent Bond Adhesion to the Paint film as a under coat primer. Curing is not compulsory and is a mandatory part of the exterior and interior cement primer coats.

Coverage Depends upon the factors like surface conditions, proper surface preparation, applications skill, weather conditions and dilution etc.,



Some of the Heat Resistant / Anti Efflorescence / Epoxy Coatings / Road Repair Products

102. SUMMERSHIELD COOL 666

100% Pure Acrylic, Polyurethane Blended
Abrasion resistant Solar Reflective
Heat Reducing & Excellent waterproof coating

Coverage : 40-50 Sft. per ltr. / per coat on
plain surface. Recommended 2 - 3 Coats

Pack : 1, 5 & 20 Ltrs.



Specially designed with insulated fillers, high performance acrylic & Polyurethane coatings, it provides excellent Solar Reflective & Heat Resistant & Waterproofing. Reflects the sunlight & reduces the temperature upto 8-10°C. Excellent Bonding with cementitious, polymer, PU, Painted coatings Highly Flexible, abrasion resistant, Crack & UV Resistant. Terrace / Madras Terrace / Roofs / Sloped roofs, External Walls, ACC / Iron / GI Sheets, etc. as an external solar reflective and heat resistant waterproof coating.

103. SUMMERPROOF COOL 644

Specially designed with insulated fillers
and 100% pure Acrylic Solar Reflective
and Heat resistant coating

Coverage : 40-50 Sft. per ltr. / per coat on plain surface.
Recommended 2 - 3 Coats

Pack : 1, 5 & 20 Ltrs.



Terrace / Madras Terrace / Roofs / Sloped roofs / Metal roofs / ACC / GI Sheets etc and external walls as an external solar reflective and heat resistant coating. Reflects the sunlight & reduces the temperature upto 6-10°C. Easy to apply. Most economical. Jointless and seamless membrane & heat resistant. Cleaning of the surface from dirt, dust and other contaminations and wash the surface. Recommended 2-3 coats.

104. RAPIDSTRONG SALT FRUSHER

Anti Efflorescence Prime Coating

Coverage : 30 Sft / Ltr. / 2 Coats



Excellent alkali & efflorescence resistance. Physical barrier to water transport. Chemical barrier to salt migration. Excellent substrate penetration with high bonding to the surface & to the top coats. Long-life high-class appearance of topcoat. Ideal for high alkaline concrete. Prevention of top coat defects. Remove the loose particles with wire brush and clean the surface. Apply with brush on concrete, plaster or brick, masonry surfaces.

105. RAINCARE WR

Nano technology transparent water based
Silicon water repellent. **Mixing ratio :** With water 1:10
Complies with BS 3826 - 1969 Class A & Class B

Excellent transparent water repellent coating. Protects the concrete/mortar surfaces from the attack of salts and acids, it prevents growth of fungus, algae and micro organisms. It fills the hairline cracks upto 0.4mm withstand UV rays and extreme weather conditions, prevents formation of efflorescence, high breathing and micro porous. **Pack :** 1, 5 & 20 Ltrs.

106. RAINCARE SWR

Solvent based Silicon water repellent DIRECT APPLICATION
Complies with BS 3826 - 1969 Class A & Class B

107. ROOFCRETE EM / EC 50

Two component High strength, Fast Setting
Fibre Reinforced Elastomeric Mortar / concrete

Pack : 5, 10 & 20

Fast setting, High Early strength, Excellent Bonding with previously damaged concrete, Polymer, fiber reinforced excellent resistant to the cracking and over comes the risk of shrinkage, Highly water, weather and abrasion resistance, Self compacting and smooth floor leveling mortar / concrete, High load bearing capacity, Corrosion protection performer for reinforced concrete, Highly durable and high flexural strength even in thin section of concrete, Low permeability and protection against moisture atmospheric conditions, High compressive strength for structural repairs and rehabilitations. Excellent workability, better cohesion, for screed/concrete mixes, Low permeability provides protection against chlorides and carbon dioxide

108. ALSTRONG FPM 553

Fast Setting, High Early Strength, High Bonding, Polymer,
Fiber Reinforced Cementitious Pre-packed Dry Mortar
Screed / Concrete)

Coverage : Excellent dry mortar. When the thickness requires
more than 20mm, can be mixed with aggregates upto 20 kgs.
per bag of 20 kgs. dry mortar pack **Pack :** 20 Kgs.

- 109) ARMSTRONG FL / SL 1000** - Solvent free chemical resistant high strength epoxy self leveling floor coating.
- 110) ARMSTRONG FL / SL - C/D** - Epoxy based, Static conductive / dissipative, seamless floor toppings.
- 111) ARMSTRONG LBF 350** - Epoxy Resin based, Low medium build chemical, abrasion resistant floor coating.
- 112) ARMSTRONG HBF 400** - High build Epoxy resin floor Coating.
- 113) ARMSTRONG ARC 450** - Acid resistant Epoxy coating for Floors & Walls.
- 114) ALSTRONG FSL 55** - Acrylic Self level flooring.
- 115) ARMSTRONG FL SLW** - 1.5 to 3 mm Self smoothing water based epoxy floor topping.
- 116) RAINSEAL RMP** - Road Marking Paint
- 117) CONPROOF FR 261** - Fire Resistant Coatings.

- 118) ALSTRONG CC 153** - High Strength, Weather Abrasion resistant acrylic penetrative concrete road & Industrial floor top coatings.
- 119) ALSTRONG CB 253** - Highly Multi purpose Grade concrete bonding agent for Roads & Industrial floors.
- 120) ALSTRONG CA 353** - High early strength concrete plasticizer for Roads, Pavement, Runways & Industrial floors minimizes curing period.
- 121) RAPIDSTRONG RMC** - Ready mix Cement concrete Dry Powder.
- 122) RAPIDSTRONG CP** - Ready mix Cement Plaster Dry Powder.
- 123) RAINSEAL FLEX TAPE** - Highly flexible Expansion Joints sealing tape.
- 124) TILEXKLEEN AC / DA / LC** - Tiles / Floors Stains Cleaning and De-greasing Agents
- 125) RAINCARE WALL PUTTY** - High performance White Cement based Waterproof Wall Putty.

Wide range of Products are there to select the right product economically which suits according to your Site conditions for enhanced / long lasting performances

Range of ARMSTRONG Products

- | | | |
|------------------------------------------------------|-----------------------------------------|--------------------------------------------------------|
| ❖ Admixtures / PC & Super Plasticizers | ❖ Polymers / PU / Polyurea Coatings | ❖ Water Reactive Grouts |
| ❖ Protective Coatings | ❖ Tile Adhesives / Grouts / Cleaners | ❖ Injection Resin for Sealing & Strengthening of Dry / |
| ❖ Anchor Grouts / Plugging Compounds | ❖ Solar Reflective Coatings | Water Bearing Concrete Structure |
| ❖ Bonding Agents | ❖ Rust Removers & Convertors | ❖ Transparent Coatings |
| ❖ Curing Compounds | ❖ Crystallization Coatings & Admixtures | ❖ Fire Resistant Coatings |
| ❖ Acrylic / PU / PS - Sealants | ❖ Rubberized Waterproof Coatings | ❖ Concrete Road Repair Products |
| ❖ Epoxies - Bonding Agents / Grouts / Floor Coatings | ❖ Bituminous Blended Coatings | ❖ Paints, Primers & Putties |
| | ❖ Quick Setting / Retarders | |



ARMSTRONG CHEMICAL'S - IN SOME OF THE INDIA'S PRESTIGIOUS PROJECTS

- ❑ FIRST BULLET TRAIN PROJECT WORKS IN INDIA L & T, MUMBAI-SURAT-AHMEDABAD
- ❑ NEW TELANGANA SECRETARIAT HYDERABAD - (SHAPOORJI & PALLONJI)
- ❑ KEC INTERNATIONAL (GOENKA GROUP)-MUMBAI
- ❑ PRESTIGE GROUP BENGALURU - KERALA PROJECTS
- ❑ HILITE BUILDERS & DEVELOPERS - KERALA
- ❑ NFC/MIDHANI/MES/BHEL/BEML/NIN/ONGC - PROJECTS
- ❑ HYDEL / THERMAL GENCO PROJECTS - TS / AP etc.
- ❑ OSMANIA UNIVERSITY / JNTU / SV UNIVERSITY / IIIT
- ❑ APOLLO HOSPITALS - HYD- BENGALURU
- ❑ YASHODA / GANDHI / OSMANIA HOSPITALS - HYD
- ❑ TIRUMALA TIRUPATI DEVASTHANAMS - TIRUPATI
- ❑ DESAI INFRA - KOLHAPUR - MAHARASHTRA
- ❑ POWER TRANSMISSION PROJECTS



- ❑ METRO RAIL PROJECTS SURAT / HYD / CHENNAI / BENGALURU etc.
- ❑ ISRO, Sriharikota, A.P.
- ❑ AIR INDIA PROJECTS HYDERABAD / THIRUVANANTHAPURAM
- ❑ MOULA-ALI DARGA & 7 TOOMBS (Heritage Structures Repair), Hyd.
- ❑ CALICUT UNIVERSITY - KERALA
- ❑ KERALA ELECTRICITY BOARD
- ❑ ADANI GROUP PROJECT - INDIA
- ❑ JOORALA ORGANIC FARMS & AGRO INDUSTRIES
- ❑ IRCON PROJECTS - Ahmadabad
- ❑ RITES PROJECTS - Surat
- ❑ MALABAR DEVELOPERS - Kerala
- ❑ YSR SMRUTHI VANAM - Atmakur, A.P.
- ❑ POWER MECH PROJECTS LTD. - Vizag



ARMSTRONG *Protects your Structures*
World's The best & proven Waterproofing Solutions